

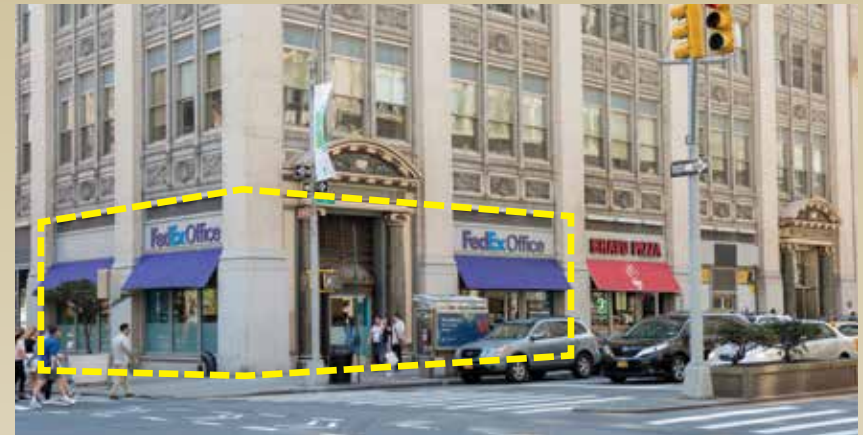
# 257 Park Avenue South

New York, NY 10010

<b>23RD STREET</b>	SPIN Starbucks Bath & Body Works  CVS pharmacy	Vitamix CLEANERS DOS TOROS EUROPEAN WAX CENTER
<b>22ND STREET</b>	Morton Williams NEW YORK HEALTH & RACQUET CLUB	FOTOGRAFISKA MUSEUM ST. GEORGES CHURCH
<b>21ST STREET</b>	NEMO BLOOMING NAILS & SPA THE SHADE STORE	BRAVO PIZZA BLUE BOTTLE COFFEE <b>257</b> Herman Miller
<b>20TH STREET</b>	GRAMMERCY TAVERN BARBOUNIA ligne roset Starbucks Bank of America	L'EXPRESS ISABELLE'S OSTERIA MOMO SUSHI UNION SQUARE CAFE
<b>19TH STREET</b>	CHASE	BOUCHERIE
<b>18TH STREET</b>	ROTHMAN'S CLOTHING SALTBAE SEPHORA THE RED DOOR	FLUSHING Bank CVS pharmacy FRAICHE MAXX IRVINGTON BAR & RESTAURANT
<b>17TH STREET</b>		



## At 21st Street



### Prime Corner Retail Space in Midtown South Up to 3,807 SF Available (Former FedEx Office)

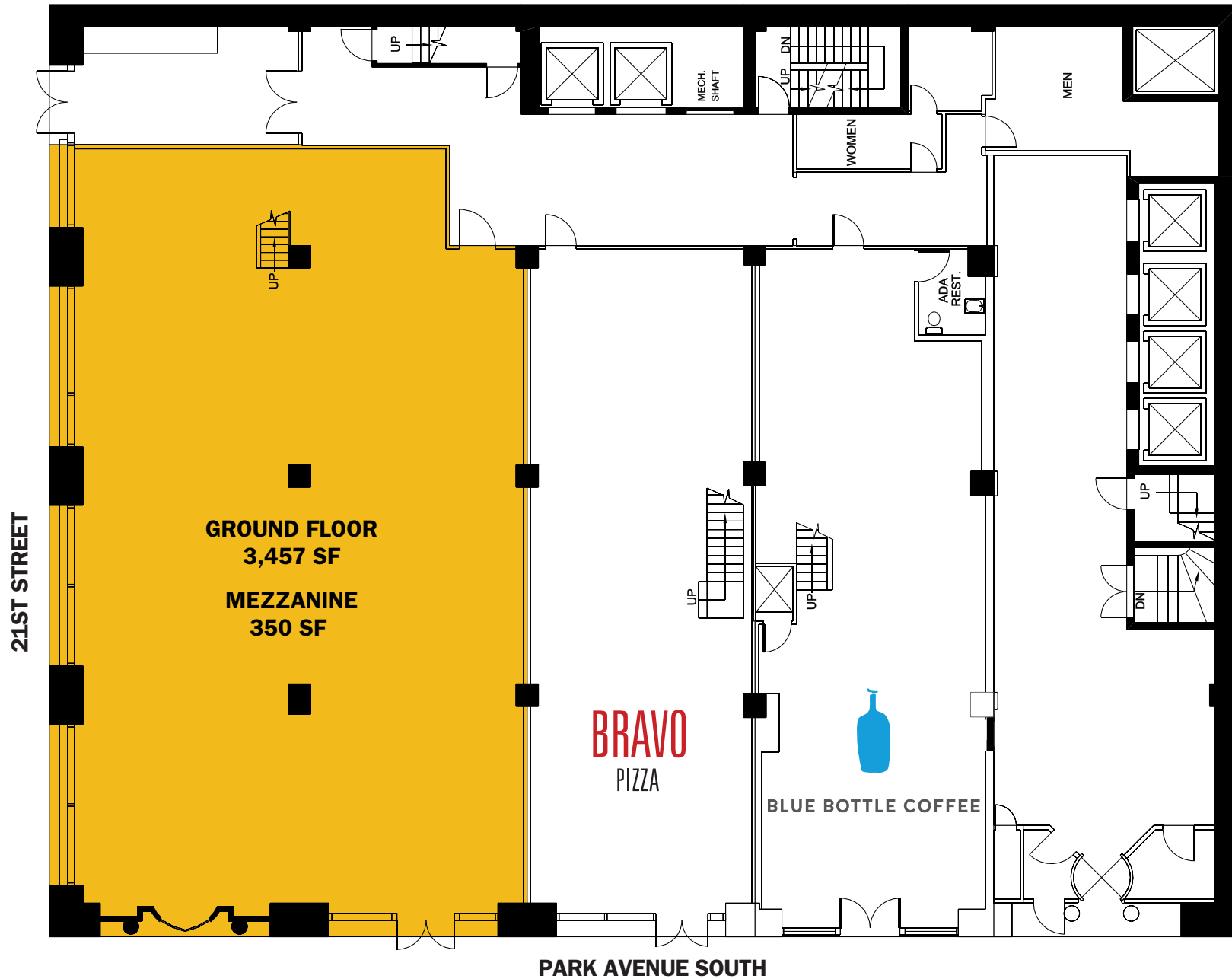
Ground Floor 3,457 SF  
Mezzanine 350 SF  
Lower Level Also Available

**Possession:** Immediate  
**Rent:** Upon Request

- Join Blue Bottle Coffee and Bravo Pizza
- Near Gramercy, Madison, and Union Square Parks, as well as the Union Square Greenmarket
- Subway transportation **N Q R L 4 5 6**



THE FEIL ORGANIZATION



For leasing information, please contact Randall Briskin 212 609 8618 | rbriskin@feilorg.com or Nicholas Dries 212 609 8687 | ndries@feilorg.com

**THE FEIL ORGANIZATION** 7 Penn Plaza, New York, NY 10001 T 212 279 7600 www.feilorg.com