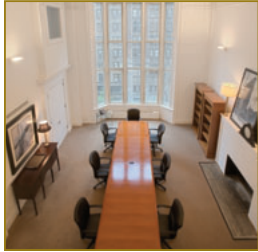




FEIL OFFICE PORTFOLIO

140 WEST 57TH STREET



Building Fact Sheet

General Description

Owner: 140 West 57th Street Building, LLC
Year Completed: 1908
Rentable Area: 75,968 SF

Area Amenities

Location: Close proximity to Carnegie Hall and Central Park

Original Design & Construction

Frame: Concrete encased steel structure
Exterior Finish: Brick masonry

Construction Details

Number of Floors: 14 floors
Typical Floor Size: 6,900 RSF
Column Spacing: 20 x 25
Typical Slab Height: 10' 0" floor-to-floor
Windows: Operable double-hung windows

Heating, Ventilation & Air Conditioning

Air Conditioning: Air and water cooled package units
Hours of Operation: 6 am – 8 pm Monday – Friday; 6 am – 1 pm Saturday

Electricity

General: 120/208 three phase
Electric Closets: Yes
Distribution: Sub-panel in each suite
Emergency Generator: 200 KW

Telecommunications

Internet: Verizon DSL, Time Warner, Road Runner, T1 Fiber Optic

ADA Compliance

Lobby/Elevators: Yes
Restrooms: Yes

Fire Safety

System: Class E notifier

Passenger Elevators

Number: 2
 One 1,600 lb. and one 2,000 lb. capacity

Freight Elevators

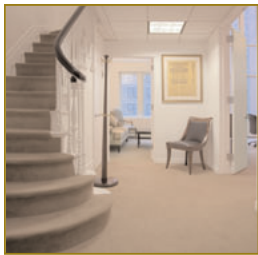
Number: 0

Security

Concierge desk
 Security cameras in lobby

Other Information

Lobby Renovation: 1997
Restrooms: Each suite has its own private restroom



AT 7TH AVENUE
 NEW YORK CITY



THE FEIL ORGANIZATION

Owner/Manager | Seven Penn Plaza | New York, NY 10001
 T 212-563-6557 F 212-563-6657 W feilorg.com
 Kevin Driscoll | x298 | kdriscoll@feilorg.com
 Nothing Beats 50 Years of Stability.